



rega

MADE IN ENGLAND

Turntables

- 2. Planar 1
- 2. Planar 1 Plus
- 2. Planar 2
- 3. Planar 3
- 3. Planar 3 RS NEW
- 4. Planar 6
- 4. Planar 8
- 5. Planar 10
- 6. Naia REF

Amplifiers

- 8. io
- 8. Brio MK7 NEW
- 9. Elex MK4
- 9. Elicit MK5
- 10. Aethos REF
- 10. Osiris REF
- 11. Mercury & Solis REF NEW

Phono Stages

- 12. Fono Mini A2D MK2
- 12. Fono MM MK5
- 12. Fono MC MK4
- 13. Aria MK3
- 13. Aura REF

Cartridges

- 14. Carbon
- 14. Nd3 NEW
- 14. Nd5 NEW
- 14. Nd7 NEW
- 15. Ania
- 15. Ania Pro
- 15. Apheta 3
- 15. Aphelion 2 REF

CD Players/DAC

- 16. Saturn MK3
- 17. Isis REF
- 17. Valve Isis REF

Loudspeakers/System

- 18. Kyte
- 18. Kyte Stand Adaptor
- 19. Rega System One™
- 20. Aya

Accessories

- 22. Advanced EBLT Drive Belt
- 22. Reference EBLT Drive Belt
- 22. Atlas MK2
- 23. Strobe
- 23. Neo PSU MK2
- 23. Couple 3 Interconnect
- 24. Wall Bracket
- 24. Wall Bracket, High End
- 24. 45 RPM Adaptor
- 25. Turntable Mat - Black
- 25. Turntable Mat - Red
- 25. Turntable Mat - Blue

Available in



PLANAR 1

This multi award-winning 'Plug and Play' design utilises our handmade RB110 tonearm, with pre-set bias, a 24V low noise motor and a factory fitted Rega Carbon cartridge. Set-up is possible in under 30 seconds and delivers incredible performance well beyond its price point. The Planar 1 is available in three matt finishes, Black, White and Walnut effect.



PLANAR 1 PLUS

All the features of the award-winning Planar 1 turntable with the addition of a built-in high quality Rega MM phono stage, making this the ultimate 'Plug and Play' turntable. Simply connect to any amplifier or active speaker with a line level input. The Planar 1 Plus is available in three matt finishes, Black, White and Walnut effect.



PLANAR 2 Nd3

Beautifully simple to set up, the Planar 2 features the fully adjustable handmade RB220 tonearm allowing a wide range of cartridges to be used. You will also find our 24V low noise motor and 10mm glass platter for improved speed stability. The Planar 2 is supplied with a factory fitted Rega Carbon cartridge as standard, additionally, the brand new Nd3 cartridge factory fitted option is now available. The Planar 2 is available in three stunning gloss acrylic skin plinth options (Black, White or Red) or matt Walnut effect finish. Stunning performance guaranteed straight out of the box.

Key features

RB110 Tonearm • Carbon Cartridge Fitted • Phenolic Resin Platter • 24V Low Noise Motor • Clear Dust Cover (Smoked on Walnut)

RB110 Tonearm • Carbon Cartridge Fitted • Phenolic Resin Platter • 24V Low Noise Motor • Integrated MM Phono Stage • Clear Dust Cover (Smoked on Walnut)

RB220 Tonearm* • Carbon Cartridge Fitted • Nd3 Cartridge Fitted Optional • 10mm Glass Platter • 24V Low Noise Motor • Clear Dust Cover (Smoked on Walnut)



PLANAR 3

The iconic Planar 3 comes fitted with the handmade precision RB330 tonearm. A serious performer, this six-time What Hi-Fi? "Product of the Year" is a must for demonstration. A mini DIN socket on the rear of the player allows simple connection of the Neo MK2 turntable PSU (sold separately). Available with a variety of Rega cartridges factory fitted (optional). The Planar 3 is available in three gloss acrylic skin plinth options (Black, White or Red) and the latest Light Oak Effect (above).

RB330 Tonearm* • 12mm Opti White Polished Glass Platter • Double Brace Technology • Nd3 or Nd5 Cartridge Factory Fitted (Optional) • 24V Low Noise Motor • Neo MK2 PSU Compatible. • Clear Dust Cover



PLANAR 3 RS

The Rega Planar 3 RS Edition (Rega Special) is constructed using a brand-new aluminium metal skin HPL laminate to create the stiffest plinth at Planar 3 level we have produced. This stunning dark brushed metallic plinth, edged in high gloss black creates a stunning platform for the iconic Planar 3. The RS Edition includes a custom matched Neo MK2 PSU with each motor vibration circuit hand tuned to each individual motor. This low noise 24v motor drives the sub platter via our Reference EBLT drive belt for ultimate accuracy in speed control. Finally, the legendary handmade RB330 tonearm is mounted and supplied with the all new award winning Nd5 moving magnet cartridge.

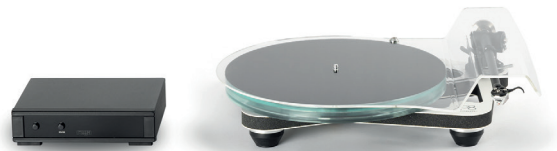
RB330 Tonearm* • 12mm Opti White Polished Glass Platter • Double Brace Technology • Nd5 Factory Fitted • 24V Low Noise Motor • Custom Matched Neo PSU MK2 Included • Smoked Dust Cover

Available in



PLANAR 6 / NEO PSU MK2

Expect serious performance and more detail from every record you play. The Planar 6 is constructed around a unique ultra-light foam core plinth and HPL laminates. It is designed to deliver a level of performance beyond anything at this price. The Planar 6 features the precision RB330 tonearm and a dual layer float glass platter. The supplied Neo MK2 turntable power supply provides convenient speed selection, advanced anti-vibration control, and electronic fine speed adjustment. The Planar 6 is available in matt Polaris Grey and matt White.



PLANAR 8 / NEO PSU MK2

The Planar 8 is built around an ultra-lightweight skeletal Tancast 8 foamcore plinth with HPL laminates. This new high rigidity plinth creates the perfect platform for the precision RB880 tonearm, lightweight bearing assembly, 24V synchronous low noise motor and triple layer float glass platter. The Planar 8 is supplied with the Neo MK2 turntable power supply as standard. Available in matt Polaris Grey and matt White.

Key features

RB330 Tonearm* • 16mm Dual Layer Float Glass Platter • Double Brace Technology • Tancast 8 Foamcore Plinth • Custom Matched Neo MK2 PSU • Nd5, Nd7 or Ania Pro MC Cartridge Factory Fitted (Optional) • Smoked Dust Cover • Clear Dust Cover (White finish only)

RB880 Tonearm* • Triple Layer Glass Platter • Double Brace Technology • Tancast 8 Foamcore • Skeletal Plinth • Custom Matched Neo MK2 PSU • Nd7, Ania Pro or Apheta 3 MC Cartridge Factory Fitted (Optional) • Smoked Dust Cover • Clear Dust Cover (White finish only)



PLANAR 10 / REF PSU

Like the NAIA, the Planar 10 was inspired by the Rega Naiad turntable. Built around our ultra-light skeletal plinth, constructed from Tancast 8 foamcore and covered in a high-pressure laminate (HPL) skin. The Planar 10 is the first production turntable to use ceramic bracing which provides the ultimate rigid surface for mounting the precision reference RB3000 tonearm and custom central bearing assembly. The Planar 10 is also fitted with a bespoke ceramic oxide platter which is diamond cut during manufacture for ultimate accuracy and speed stability. The Rega 24V synchronous motor is controlled by our most advanced outboard power supply, the Planar 10 PSU. This supply delivers the ultimate in motor vibration reduction, electronic fine speed adjustment and the convenience of electronic speed change. The Planar 10 is designed to deliver the ultimate in Rega performance by extracting more information from the vinyl groove than ever before. The Planar 10 is available in matt Polaris Grey and matt White.

RB3000 Tonearm* • 18mm Ceramic Platter • Ceramic Top Brace • Tancast 8 Foamcore - Skeletal Plinth • Advanced Custom PSU • Apheta 3 or Aphelion 2 MC Cartridge Factory Fitted (Optional) • Smoked Dust Cover • Clear Dust Cover (White finish only)

Available in



REF



NAIA / REF PSU

The Rega Naia turntable is the result of years of painstaking development which was used to create the now famous 'Naiad' test bed turntable. The Naia takes the best of this development and technology and transfers it into a production ready version without compromise. The Naia is packed with ground-breaking features, materials and technology developed by Rega over many years to reach new levels of vinyl replay. The Naia takes our pioneering low mass high rigidity plinth technology to the next level by using a Graphene impregnated carbon fibre skeletal plinth with Tancast 8 foam core. This ultra rigid structure is then strengthened further using two ceramic aluminium oxide braces, the same material used to create the redesigned, resonance controlled ceramic platter with improved flywheel effect and complex profile.

Key features

RB-Titanium Tonearm* • Resonance Controlled Ceramic Platter • Ceramic Top Brace • Ceramic Bottom Brace • Tancast 8 Foamcore - Carbon Fibre Skeletal Plinth • Triple Reference Drive Belts • Advanced Custom PSU • Apheta 3 or Aphelion 2 MC Cartridge Factory Fitted (Optional) • Smoked Dust Cover



Rega's most advanced turntable plinth

In order to achieve the ultimate balance between low mass and extreme rigidity, Rega has pioneered the use of graphene impregnated carbon and a Tancast 8 polyurethane foamcore. Both materials are widely used in the aerospace industry and provide the perfect platform on which to assemble a turntable. The ultra lightweight random structure of the foam core helps reduce vibration transmission whilst the stiffness of the skin ensures no microscopic movement of the plinth occurs during playback. The addition of graphene boosts the strength and stiffness of the carbon fibre even further to create the stiffest production plinth we have ever produced.

Aluminium Hub and ZTA Hub Bearing Assembly

The Naia uses a custom aluminium sub-platter with a spindle and central bearing manufactured from ZTA (zirconium toughened alumina). ZTA was formerly developed for use in much larger machines used in the paper industry. The resistance against abrasion was much higher than alumina oxide which makes it the perfect material to construct a central bearing assembly from. Exceptionally complex to make, production is similar to other oxide ceramics. Starting life as a powder preparation with spray drying, the piece is formed in an isostatic press (which applies pressure in all directions to create even density). The piece is then turned in a green state (before firing) then fired at 1600 °C for 3 days before grinding the bottom flange and bore before final honing to match the spindle diameter. The spindle and bearing are then kept together as a set to guarantee the perfect fit.

ZTA is better against abrasive wear and is exceptionally hard, with both the spindle and bearing being manufactured from identical material. This reduces the risk of wear as they have identical hardness. The spindle will run on an ultra-thin layer of fully synthetic oil which reduces wear even further. The result of this complex engineering process is the hardest, most accurate and longest lasting bearing assembly we have ever produced.

RB-TITANIUM Tonearm

The RB-Titanium tonearm is the most advanced and accurate production tonearm we have ever released. The entire tonearm structure is designed to have the minimum of mechanical joints whilst using the stiffest materials in all critical areas. The RB-Titanium achieves near frictionless movement horizontally and vertically whilst having no measurable free play in the bearing assemblies. The RB-Titanium uses a new one-piece titanium vertical bearing housing and titanium vertical spindle assembly. The recommended Rega Aphelion 2 MC will be mounted upon our unique hand-polished aluminium single piece arm tube to keep mass as low as possible. The design is completed with a Tungsten balance weight shaft and balance weight.



io

The io has been designed to offer exceptional Rega performance at an affordable price point. It uses the same amplifier stage as the multi award-winning Brio, now designed to run at 30W per channel into 8Ω. The io features two line level inputs, a high specification Rega moving magnet phono stage, and a dedicated high quality headphone output. The io will integrate seamlessly into any home audio system whilst remaining simple to use and easy to set up. A must for demonstration.

Key features

30W Per Channel into 8Ω • 2 Line Level Inputs • Moving Magnet Phono Stage • Headphone Output • Mini System Remote Included



BRIO MK7

The new Brio Mk7 retains the familiar 50W per channel into 8Ω Class AB design, but now offers improved performance, features, and aesthetics. In addition to a moving magnet phono and three-line level inputs, there is now a coaxial and optical S/PDIF digital input. Thermal shutdown and remote-controllable standby are also new additions. A new case design has allowed the incorporation of these additional features while improving thermal dissipation and lowering noise and distortion, and complements the appearance of the other products in the Rega range. The high-quality headphone output is retained.

50W Per Channel into 8Ω • 3 Line Level Inputs • Moving Magnet Phono Stage • S/PDIF Coaxial and Optical Inputs • Headphone Output • Thermal Cut-Out • Mini System Remote Included



ELEX MK4

The Elex MK4 is a high performance stereo integrated amplifier designed to deliver the purest musical performance. Housed in a brand-new case to match the rest of the Rega range, the MK4 builds on previous Rega designs using our multi award-winning class A/B power amplifier circuit which delivers an impressive 72W per channel into 8Ω loads. New rear connectivity options are available with the Elex MK4 now including a Rega DAC circuit with two digital inputs and a high quality headphone output conveniently located on the front panel.

72W Per Channel into 8Ω (90W into 6Ω) • Integrated MM Phono Stage • Mini System Remote Control • 4 x Line Inputs • 2 x Digital Inputs • Headphone Output • Thermal Cut-Out



ELICIT MK5

The Elicit MK5 calls on decades of electronic design experience. It is a complex blend of three of our most successful products which promises to deliver big on sound, power, features and style. The Elicit MK5 is capable of driving difficult loudspeakers with ease and will integrate perfectly into any audio system by offering a wide range of connectivity options. In addition to line, digital, and a high-quality moving magnet (MM) phono input, you will also find pre-out, Direct in, Record loop functionality and the high-performance headphone output.

105W Per Channel into 8Ω (127W into 6Ω) • Integrated MM Phono Stage • Solaris Remote Control • 4 x Line Inputs • 2 x Digital Inputs • Direct Input • Record Input • Headphone Output • New Advanced Pre-Amplifier • Thermal Cut-Out



AETHOS

The Aethos stereo amplifier is housed in a custom designed case. Employing four 160W 16 Amp output transistors per channel, this delivers 156W per channel into 6Ω. The Aethos is a dual mono design using a custom wound toroidal transformer and regulated supplies for the sensitive amplification and driver stages. The pre-amplifier stage uses class-A discrete circuitry throughout. The Aethos is a no compromise product with one goal, to deliver your music as faithfully as possible.



OSIRIS

The Osiris is the culmination of more than three decades of experience in solid-state amplifier development. A no compromise, super high-performance amplifier delivering 162W into 8Ω. A dual mono amplifier housed in a custom Rega CNC machined aluminium case. Designed around "minimalist" high gain power amplifier and "passive pre-amplifier" circuit topology, the Osiris offers unrivalled performance and build quality.

Key features

125W Per Channel into 8Ω (156W into 6Ω) • 5 x Line Inputs • Direct Input • Record Out • Pre-Amp Out • Headphone Input • Solaris System Remote Included

162W Per Channel into 8Ω (250W into 4Ω) • 4 x Line Inputs • Direct Input • Record Out • 1 x Balanced Input via XLR • Galvanically Isolated Power Supply • Custom Reference CNC System Remote Handset • Rega Reference Mains Lead Included



MERCURY & SOLIS

Drawing together all of the experience Rega has had in solid state electronics, we are pleased to present the pre/power combination Mercury and Solis. Utilising fully discrete symmetric circuitry in all core signal paths, these products represent the pinnacle of audio performance. Mercury features one balanced and four unbalanced line inputs, in addition to a tape/record loop, 4 S/PDIF inputs, and an electrically isolated asynchronous USB input. Balanced and unbalanced outputs are complimented by a fully discrete symmetric headphone amplifier and a full colour display. Following on, Solis offers two 170W into 8Ω amplifier channels utilising the same fully discrete symmetric circuitry. Unbalanced and balanced inputs are offered, as well as a 12V trigger input for system integration.

170W Per Channel into 8Ω • 1 Balanced Input • 4 Unbalanced Inputs • 2 Coaxial S/PDIF Inputs • 2 Optical S/PDIF Inputs • USB Input • Tape/Record Loop • Balanced and Unbalanced Outputs • AV Bypass • Discrete Headphone Amplifier • Unbalanced and Balanced Inputs • Rega Reference Mains Lead Included

MM



FONO MINI A2D MK2

The Fono Mini A2D is a compact high-quality phono pre-amplifier for use with any moving magnet cartridge. The addition of a USB interface allows you to easily transfer vinyl to your PC if required. The restyled Fono Mini A2D pre-amplifier offers improved usability, exceptional performance and incredible value for money while promising to be a valuable addition to any hi-fi set up.

MM



FONO MM MK5

The Fono MM MK5 is a high-performance dedicated phono pre-amp suitable for MM cartridges. This latest design uses a fully discrete, cascaded, complementary amplifier input stage, a configuration designed to optimise the performance of your moving magnet cartridge. The Fono MM MK5 is housed in a brand-new case to match the rest of the Rega range offering a modern look guaranteed to integrate into any hi-fi system. What Hi-Fi? "Product of the Year" 2023.

MC



FONO MC MK4

The Fono MC MK4 is an exceptionally high quality MC phono stage designed to maximise the potential of any low output MC cartridge. Although specifically designed to complement the latest Rega range of moving coils you will find full adjustability for gain and loading via dip switches conveniently placed on the rear panel making the Fono MC MK4 compatible with a wide range of third-party low output MC cartridges. Now housed in a brand new redesigned case to match Rega's latest range of electronics.

Key features

MM Phono Pre-Amplifier (compatible with all MM cartridges) • USB Output • A2D Functionality

Dedicated MM Phono Pre-Amplifier (compatible with all MM cartridges)

Fully Adjustable Dedicated MC Phono Pre-Amplifier (compatible with all low output MC cartridges)



ARIA MK3 (MM/MC)

Housed within our latest half width custom designed case are two entirely separate, high performance phono stages. One fully adjustable, dedicated moving coil and one moving magnet. Both stages have their own separate input sockets and input pre-amplifier circuitry. This enabled us to design bespoke input circuitry for each cartridge type without compromises, offering an exceptional level of performance and flexibility for both styles of cartridge.



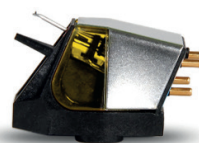
AURA

The reference Aura MC stage is a fully adjustable, three stage, all symmetrical pre-amplifier designed purely to extract the best performance from any moving coil cartridge. Housed in a completely redesigned custom case, the Aura is the culmination of decades of electronic design development from our team of dedicated Rega engineers. If you are a vinyl connoisseur, the Aura is an absolute must for demonstration.

Switchable Phono Pre-Amplifier (compatible with MM and low output MC cartridges) • Fully Adjustable MC Stage

MC Phono Pre-Amplifier (compatible with all typical low output MC cartridges) • Fully Adjustable

Available in



CARBON

The Rega Carbon is a high quality, moving magnet pick-up cartridge designed to be simple to set up, easy to install and above all, accurately reproduce music.

Supplied as standard on the multi award-winning Planar 1 and Planar 2 turntables, the Carbon performs far beyond its entry level price tag.

Nd3

The all new Nd3 moving magnet cartridge was developed over 10 years and promises to deliver 'next level' performance from moving magnet technology. The Nd range (patent pending) we believe is a world first to use ultra-high powered Neodymium magnets which allow us to create this totally unique design.

Nd5

Each Nd5 is meticulously hand-made by our highly skilled technicians. The stylus profile is a perfect elliptical nude diamond. This is a true ellipse created by an elliptical grinding process made from polycrystalline manmade diamond. The design uses brand new generator geometry with perfect symmetry to achieve accurate channel balance.

Nd7

Each Nd7 is meticulously hand-made by our highly skilled technicians. The Nd7 uses our most advanced "fine line" nude diamond profile for the ultimate in detail retrieval. (The same profile is used on our high end MC models the Apheta 3 and Aphelion 2). This profile has an exceptionally small radii Monocrystalline manmade diamond with the minor radius being just 3µm (microns) as viewed from the top and 30µm in the vertical when viewed from the front.

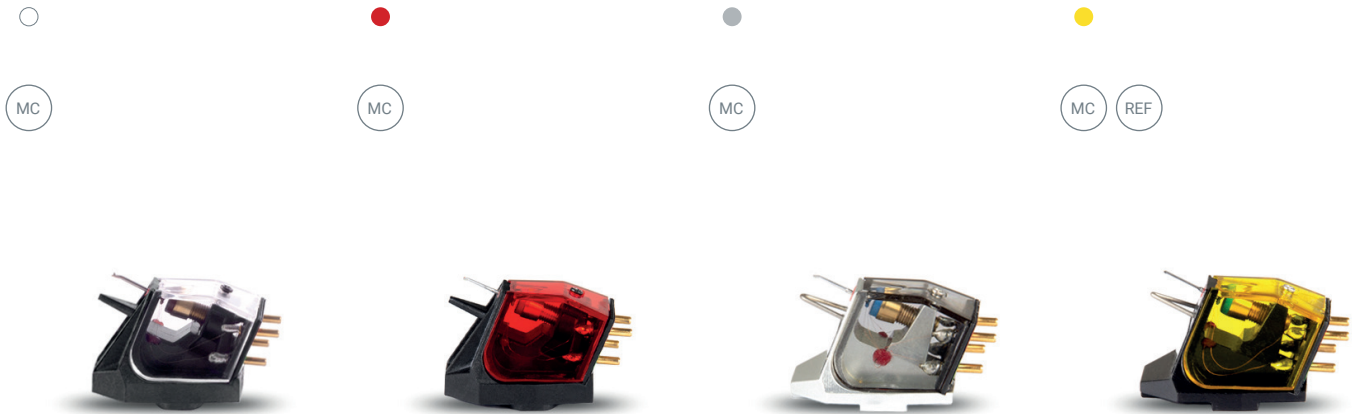
Key features

Carbon Cantilever • Elliptical Profile • Detachable Stylus

Neodymium Magnet • Highly Rigid Lightweight PPS Body • Bonded Elliptical Profile Stylus • Aluminium Cantilever • Rega Three-Point Mounting System

Neodymium Magnet • Highly Rigid Lightweight PPS Body • Perfect Elliptical Nude Diamond Profile Stylus • Aluminium Cantilever • Rega Three-Point Mounting System

Neodymium Magnet • Highly Rigid Lightweight PPS Body • Fine Line Nude Diamond Profile • Aluminium Cantilever • Rega Three-Point Mounting System



ANIA

The Ania was designed to complement the Planar 3 and Planar 6 turntable models. Housed in a unique PPS ultra-rigid body, the Ania shares the same highly complex, hand-wound micro coil and super high-powered magnet assembly found in the more expensive models. Using an aluminium cantilever mounted with an elliptical profile stylus, the Ania delivers a balanced and dynamic performance which will bring a new dimension to your vinyl collection.

Hand-wound Micro Coil • Unique PPS Ultra-Rigid Body • Elliptical Profile Stylus • Aluminium Cantilever • Rega Three-Point Mounting System • High Specification Fine Wire 0.018mm

ANIA PRO

The Ania Pro uses our advanced 'Vital' profile nude diamond stylus. This delivers tight bass, warm mid-ranges and accurate top end frequencies to offer a well-balanced and detailed performance. The Ania Pro is housed in a unique PPS highly rigid body and features a super high-powered, neodymium magnet and a coil meticulously hand-wound on to an iron micro cross. This miniature assembly allows us greater freedom to track the vinyl groove, guaranteeing even more detail is extracted from the vinyl.

Hand-wound Micro Coil • Unique PPS Ultra-Rigid Body • 'Vital' Profile Nude Diamond Stylus • Super High-Powered Neodymium Magnet • Rega Three-Point Mounting System • High Specification Fine Wire 0.018mm

APHETA 3

Housed in a custom body, machined from a single piece of aluminium, the Apheta 3 uses an aluminium cantilever with an advanced 'fine line' profile, nude diamond stylus mounted through 90 degrees. This assembly is coupled with a super high-powered neodymium magnet, and our micro coil, meticulously hand-wound on an iron cross that is fifty percent smaller than the original design. This coil weight reduction allows greater freedom to track the vinyl groove ensuring even more detail is extracted from the vinyl. Designed to complement the high end Rega range.

Hand-wound Micro Coil • Machined Aluminium Body • 'Fine Line' Profile Nude Diamond Stylus • Aluminium Cantilever • Super High-Powered Neodymium Magnet • Rega Three-Point Mounting System • High Specification Fine Wire 0.018mm

APHELION 2

The Aphelion 2 is the ultimate in micro engineering and design. Our unique hand-wound micro cross and coil assembly is built directly onto a Boron rod cantilever. The advanced 'fine line' profile nude diamond is then mounted through 90 degrees which offers extreme levels of stiffness and control over the stylus. This design requires a 'zero tolerance' approach to engineering to achieve the highest level of performance from a Rega cartridge to date. Designed to complement the reference range of Rega turntables including the Naiad.

Iron Micro Cross & Coil Assembly • 'Fine Line' Profile Nude Diamond Stylus • Boron Rod Cantilever • World's Most Powerful Miniaturised Neodymium Magnet • Graded Zero Tolerance Black Anodised Aluminium Body • High Specification Fine Wire 0.018mm



SATURN MK3

The Saturn MK3 CD-DAC is essentially two products in one, a high specification CD transport and independent DAC circuit offering resolution up to and including 24-bit 192kHz. The Saturn MK3 has two optical inputs, two Co-axial inputs, a fully asynchronous USB and an added 'direct' digital output from the CD playback section ensuring perfect integration into any audio system. Both sections are fully remote controllable via the supplied Solaris remote handset.

Key features

CD Player & 24-Bit 192kHz Advanced DAC • Wolfson DAC • Enhanced Output Amplifier Circuit • Enhanced Digital Power Supplies • Rega's Unique CD Control Software • Rega Solaris System Remote Control



ISIS

Rega's flagship CD player is a product manufactured to the highest achievable quality, inside and out. The Isis features discrete class A operational amplifiers and filters optimised for sonic performance. Using twin Burr Brown DACs running in parallel dual mono mode, offering wide dynamic range with low distortion. Each laser mechanism is graded and matched to the servo circuit.

Rega's Advanced CD Technology • Twin Burr Brown DACs • Rega 'K-Power' Smoothing Capacitors • Custom Designed Reference Case • CNC Reference Remote Control



VALVE ISIS

The Valve Isis shares the same digital and USB sections as found in the solid-state version, however, the analogue stage is valve based with passive filtering. This stage uses two military specification triple mica 5814A (ECC82/12AU7) triodes being driven by the revolutionary Wolfson WM8741 ultra high performance digital to analogue converter. Each laser mechanism is graded and matched to the servo circuit.

Rega's Advanced CD Technology • Twin Wolfson DACs • Rega 'K-Power' Smoothing Capacitors • Custom Designed Reference Case • CNC Reference Remote Control



KYTE

Become immersed in the stunningly natural sound of the Kyte loudspeakers system. Meticulously designed to deliver the true Rega sound at an affordable price. Using our own ZRR high frequency unit and a handmade pair of Rega MX-125 bass-mid drivers, the Kytes are meticulously hand assembled in house using our unique phenolic resin cabinets. Internally, they feature ceramic plates and carefully engineered cross bracing developed to make the cabinet extremely stiff. This prevents unwanted resonances interfering with the accurate output of the drive units and directly improves both dynamics and the bass performance from the speaker. This compact bookshelf speaker is designed to complement any hi-fi or audio system.

Key features

Phenolic Resin Cabinets • Fully Braced • Handmade MX-125 Bass-Mid Unit • Rega Designed ZRR High Frequency Unit • Sensitivity 89dB • Rear Ported Bass Reflex Design • Optional Feet Included • Kyte Stand Adaptor (sold separately)



KYTE STAND ADAPTOR

Optional Kyte accessory sold separately.

Designed to fit directly in place of the supplied rear Kyte foot, these adaptors provide a large footprint and a more stable platform when used with third party loudspeaker stands. Constructed from sturdy 2mm powder coated mild steel, the Kyte adaptors are laser cut and CNC folded to ensure accuracy.

Designed for the Kyte loudspeaker • Suitable for all standard loudspeaker stands. • Rubber damping feet supplied



REGA SYSTEM ONE™

The perfect all in one solution, Rega System One™ is designed to be simple to set up and get you spinning your vinyl in minutes. Rega System One™ delivers a full analogue experience straight out of the box, consisting of the multi award-winning Planar 1 turntable, the io amplifier and Kyte loudspeakers. The io amplifier has a high-quality built-in phono stage, two-line level inputs and a headphone socket offering plenty of connectivity options. Rega System One™ is a unique analogue audio system designed to bring you the true Rega signature sound at an affordable price.

Rega fans out there will know that we have always questioned the marketing and science surrounding turntables. Experiments and research have allowed us to debunk most commonly held beliefs and use real engineering to produce world beating sound quality at sensible prices. However, the loudspeaker market is very different because a valid scientific and engineering discipline exists which in turn has created hundreds of competitors in the loudspeaker marketplace. The success of many loudspeakers depends on powerful marketing and eye-watering advertising budgets (of which Rega spends zero). The funds that most loudspeaker companies would spend on marketing, Rega has put it all into research and development to achieve a totally unique cabinet construction and our own high frequency unit and bass/midrange driver (incorporating a four-layer voice coil). We even manufacture and wind our crossover components in house.

Inside the box: Planar 1 Turntable • io Amplifier • Kyte Loudspeakers • Mini System Remote • Set of 3m Speaker Cables

AYA

Developed over ten years by a team of Rega designers headed up by our founder Roy Gandy, the AYA loudspeakers promise to deliver a detailed, balanced performance no matter which genre of music you decide to play. Using Rega designed, handmade drivers, coupled with our ZRR high frequency tweeter and a new crossover, our engineers have fine-tuned every aspect to deliver the best possible performance. The sculptured cabinets and stand create an attractive, floating effect which adds to the unique appearance.



Key features

Custom GRC (Glass Reinforced Cement) Cabinets • Band Pass Cabinet Design • 5" Handmade MX-125 Bass-Mid Unit • 7" Handmade RR7.8 Bass Driver • Rega Designed ZRR High Frequency Unit • Sensitivity 89.5dB • Front Ported Design • Optional Grilles (sold separately)



Breaking the mould...

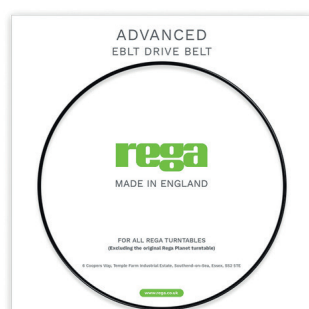
After a decade of trials and development, the Rega AYA loudspeakers are born. Housed in a unique, UK manufactured cabinet moulded from GRC, (glass reinforced cement) the glass fibres that make up the construction reduce the weight whilst increasing the structural integrity of this 2.5 way band pass design. This technique creates the perfect loudspeaker enclosure that enhances performance whilst offering exceptional value for money. Thanks to the combination of the new enclosure and drive unit configuration, the AYA loudspeakers deliver a tight accurate bass response and the Rega signature midrange and detailed highs.

If Rega was to continue with our customer promise to deliver exceptional performance and value for money, the ever-increasing cost of real wood veneered MDF cabinets meant we had no choice but to investigate other options. After a decade of trials and development, the AYA loudspeakers are housed in a unique, UK manufactured cabinet moulded from glass-reinforced cement. The glass fibres that make up the construction reduce the weight whilst increasing the structural integrity of this 2.5 way band pass enclosure.

This technique creates the perfect loudspeaker enclosure that enhances performance whilst offering exceptional value for money. The process of moulding the AYA loudspeaker cabinets was developed alongside a UK-based company who are best known for bespoke concrete furniture and installations.

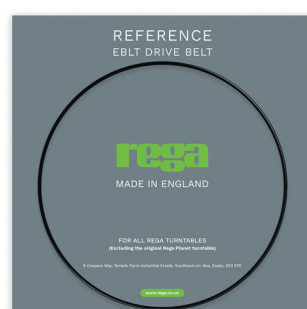
Rega fans out there will know that we have always questioned the marketing and science surrounding turntables. Experiments and research have allowed us to debunk most commonly held beliefs and use real engineering to produce world beating sound quality at sensible prices. However, the loudspeaker market is very different because a valid scientific and engineering discipline exists which in turn has created hundreds of competitors in the loudspeaker marketplace. The success of many loudspeakers depends on powerful marketing, eye watering advertising budgets (of which Rega spends zero) and financial inducements to retailers. The funds that most loudspeaker companies would spend on marketing, Rega has put it all into research and development to achieve a totally unique cabinet construction.

Not unlike real wood veneer, GRC has its own characteristics. Each cabinet will be uniquely different due to the manufacturing process. Changes in shade and small surface holes in the cement are common and an expected part of the design and are not a fault. We feel these features add character to these unique cabinets.



ADVANCED EBLT DRIVE BELT

The Advanced EBLT Drive Belt is moulded on our highly accurate custom tooling. Boasting increased stability, speed accuracy and a 50% increase in lifespan over the old Rega drive belt.



REFERENCE EBLT DRIVE BELT

The Rega Reference EBLT drive belt is the culmination of many years of R&D and advanced tooling trials. The most accurate drive belt we have ever produced, the Reference EBLT is now fitted as standard to all Planar 6, Planar 8 and Planar 10 turntable models as standard. The Reference belt is suitable for all Rega turntables but highly recommended for the Planar 3 when using the Rega Neo MK1/MK2 PSU.



ATLAS MK2

Setting the correct tracking pressure is critical to achieve the best from your cartridge. The Atlas is designed to provide reliable and accurate measurement of tracking force for the lifetime of your turntable. Inside the durable aluminium casework is a highly stable loadcell and precision amplification circuitry. There is also a custom-designed front guard to protect the measuring element and provide easy alignment.

Key features

Advanced EBLT Drive Belt • Fitted as standard on all Planar 1, 2 & 3 models from March 2021 • Suitable for all Rega turntables.

Reference EBLT Drive Belt • Fitted as standard on Planar 6, 8 & 10 models • Suitable for all Rega turntables. • Recommended upgraded for Planar 3 (when used with Neo MK1/MK2 PSU)

Reliable & Accurate Measurement • 0.5g - 10g Tracking Range • Durable Aluminium Casework • MK2 version boasts wider range and improved stability. • Battery Operated (supplied) • Pre-installed 9V Battery



STROBE

The Rega Strobe Kit is designed to evaluate the speed of any turntable. The hand-held strobe unit generates a 100Hz pulsed light source for use with the supplied 180-line stroboscopic disc.

Pre-installed 9V Battery • Perfect partner for the Rega Neo MK1/MK2 PSU. • Evaluate the speed of any turntable.



NEO PSU MK2

The Neo MK2 PSU is an advanced turntable power supply providing user controllable fine speed adjustment, an advanced anti-vibration motor circuit and the convenience of electronic speed change. The Neo MK2 will make a welcome addition to any compatible Rega turntable by reducing motor noise, improving speed stability and rotational speed accuracy.

Compatible models: Planar 3 2016-current / P3-24 / RP3 / RP6 / P5 / P7 / RP40 special edition / RP8 or any older Rega turntable fitted with our aftermarket 24V upgrade kit.

Advanced Anti-Vibration Circuit • Fine Motor Speed Adjustment • Electronic Speed Change • Compatible with many 24V Rega turntables with a DIN lead input (check compatibility with your dealer).



COUPLE 3 INTERCONNECT

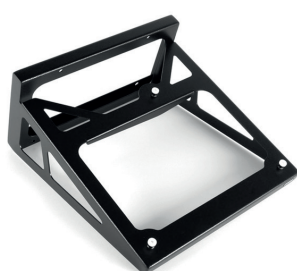
The low capacitance cable used for the Couple 3 is constructed using oxygen free copper (OFC) with an ultra-flexible jacket. This cable was originally developed as a critical component used inside our award-winning reference level Aura phono stage. The 80pF capacitance of this cable is matched to our custom tonearm cables used throughout the Rega range. This feature will optimise performance when used between phono stage and amplifier.

Interconnect available in 1m, 1.5m & 2m lengths. • Multi Strand OFC Cable • Gold Plated Neutrik RCAs • Low Capacitance Cable • 100% Shielding Factor • Ultra Flexible Jacket



WALL BRACKET

The ultimate in vibration isolation for your turntable, the next generation of turntable wall bracket is manufactured from lightweight 3mm laser cut folded aluminium.



WALL BRACKET HIGH END

A custom ultra-lightweight 2mm aluminium wall bracket designed specifically for the latest skeletal Rega turntables. The wall bracket will deliver the best performance from your turntable by providing complete isolation.



45 RPM ADAPTOR

The record adaptor has been designed to be used with your 45 rpm records that no longer have the centres, enabling you to play your old favourites.

Key features

Designed for Planar 1, 2, 3 & 6 and many older Rega models. • Simple screw fit adaptors are available to fit the older RP8 & RP10 turntables. • 1.2kg lighter and more rigid than the previous model. • Available in Black and White

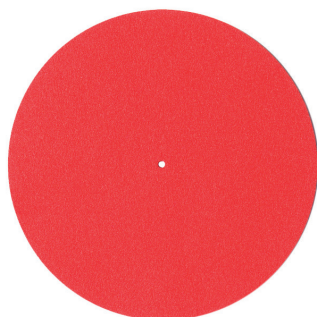
Designed for Planar 8, 10 & Naia • Ultra Lightweight Laser Cut 2mm Folded Aluminium • Adjustable for use on uneven walls. • Provides complete isolation. • Available in Black and White

45 rpm Adaptor • CNC Machined Aluminium • Suitable for all turntables.



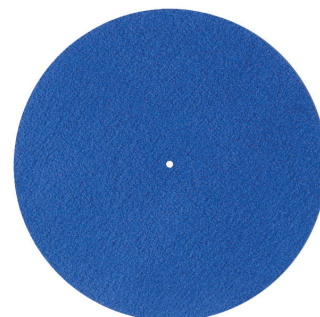
TURNTABLE MAT - BLACK

High quality 100% wool mat suitable for all Rega turntables.



TURNTABLE MAT - RED

High quality 100% wool mat suitable for all Rega turntables.



TURNTABLE MAT - BLUE

High quality 100% wool mat suitable for all Rega turntables.

100% Wool Turntable Mat - Black as used
on Planar 3, 6 & 8 • Thickness: 2mm

100% Wool Turntable Mat - Red • Thickness:
2.5mm

100% Wool Turntable Mat - Blue •
Thickness: 2.5mm



www.rega.co.uk



[@RegaResearch](https://twitter.com/RegaResearch)



[regaresearch](https://www.instagram.com/regaresearch)



[@regaresearchuk](https://www.youtube.com/@regaresearchuk)



[@rega.co.uk](https://www.facebook.com/@rega.co.uk)

rega

MADE IN ENGLAND

Rega Research Ltd.

Registered office: 6 Coopers Way, Temple Farm Industrial Estate, Southend-on-Sea, Essex, SS2 5TE, England

Product Brochure Ver. 1.0.2025